



Cari Watkins-Bates
Director of Land Conservation



**SCENIC
HUDSON
.ORG**

OUR MISSION

Scenic Hudson preserves land and farms and creates parks that connect people with the inspirational power of the Hudson River, while fighting threats to the river and natural resources that are the foundation of the valley's prosperity.

Protecting the Hudson Valley's Natural Treasures

THE FOUNDATION OF OUR HEALTH, ECONOMY AND QUALITY OF LIFE

- ▶ 48,000+ acres conserved for wildlife/biodiversity, clean air/water, scenic beauty
- ▶ 65+ parks, preserves and historic sites created or enhanced for public enjoyment
- ▶ over 20,000 agricultural acres conserved on 135+ farms for fresh, local food



Iconic views



Exceptional wildlife habitat



Productive farmland

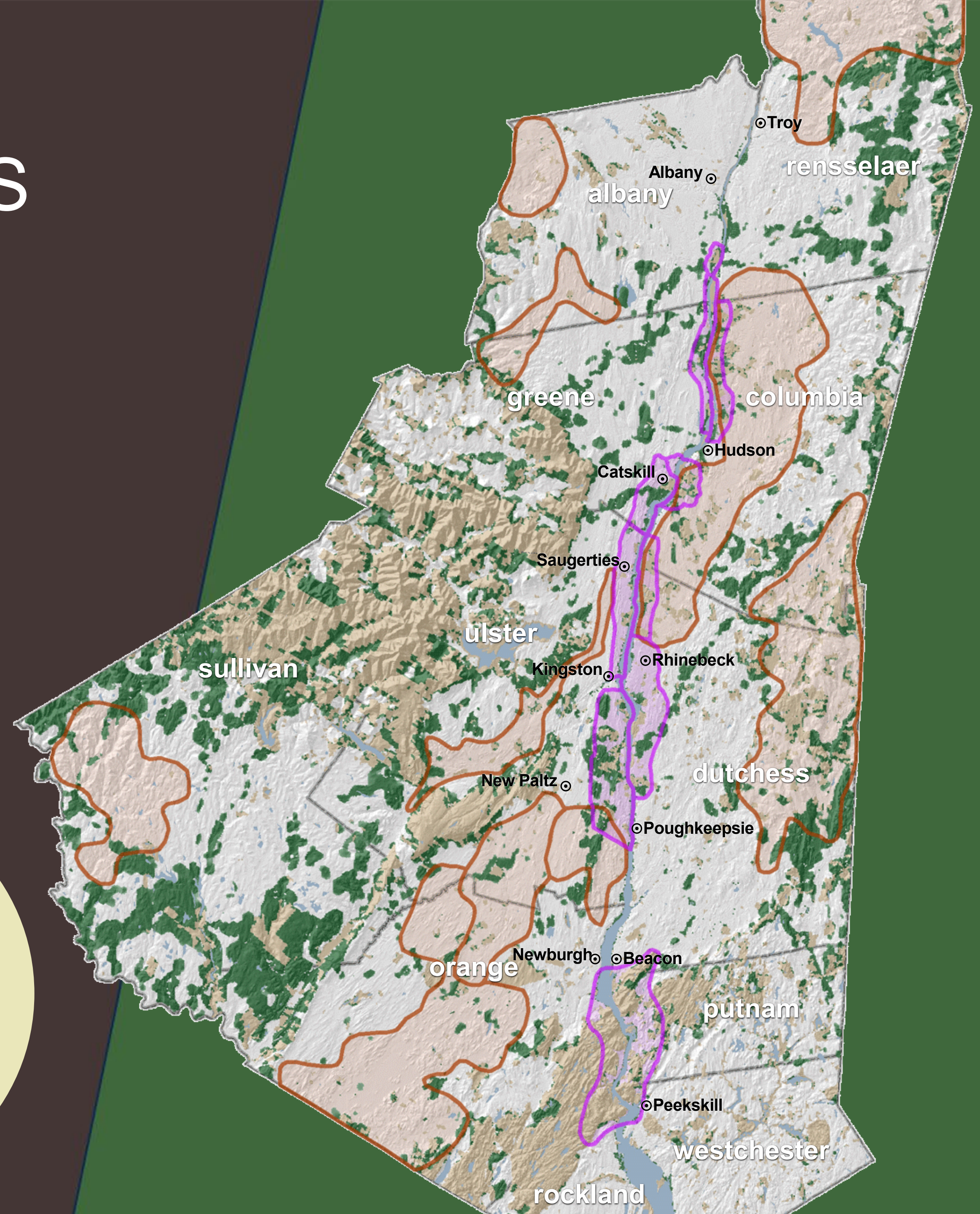
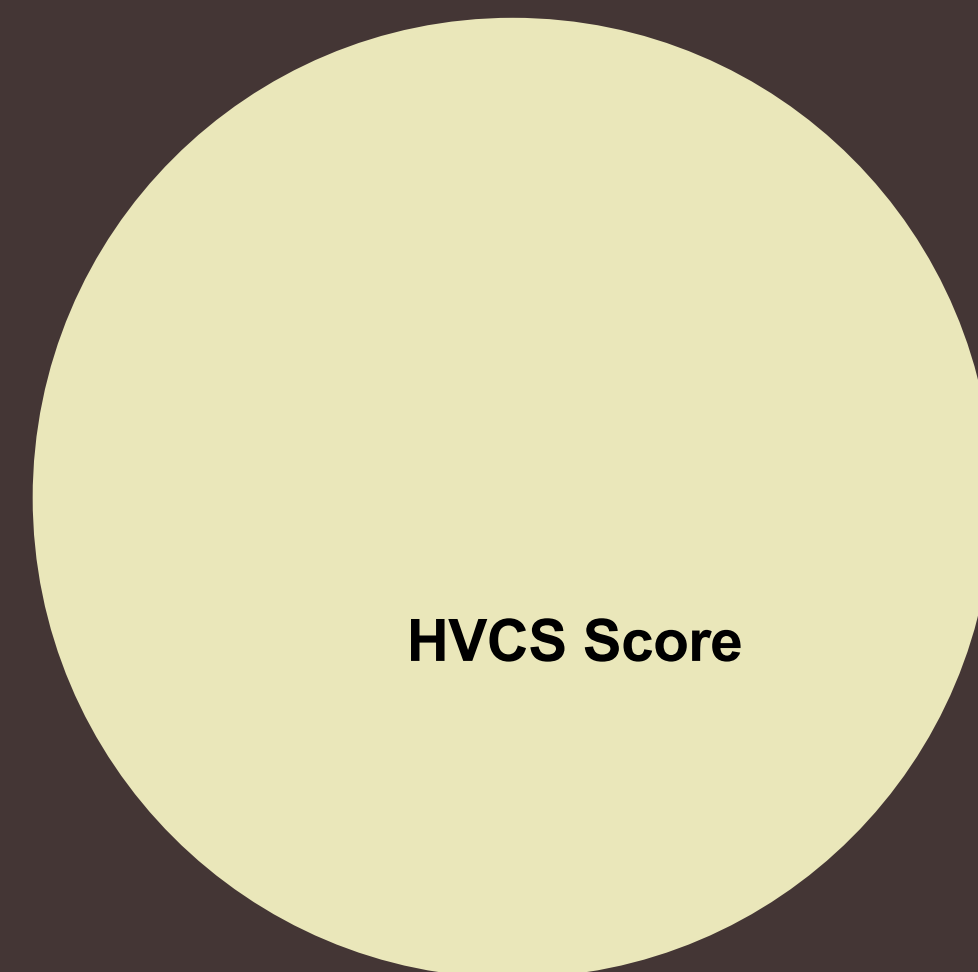


World-class landscapes

CONSERVATION PRIORITIES

Protecting the Hudson Valley's most important scenic, agricultural and ecological land through innovative and collaborative strategies.

- Saving the Land That Matters Most
- Hudson Valley Conservation Strategy
- Foodshed Conservation Plan



LAND CONSERVATION

Preserving land in the Hudson Valley

- Purchase of land and easements
- Working in partnership
- Leveraging public and private funds



SCOFIELD RIDGE



TALIAFERRO FARMS

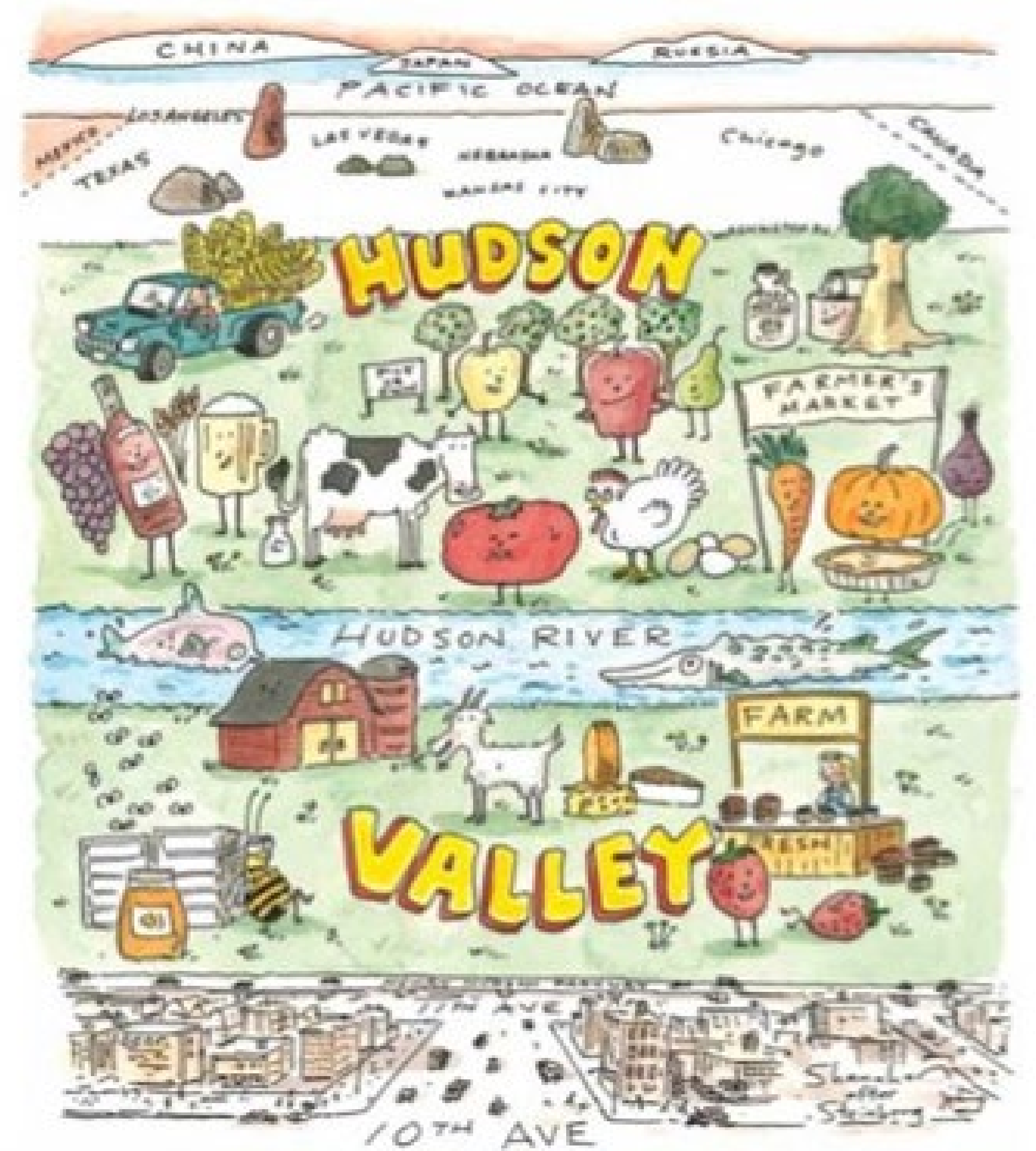
FOODSHED CONSERVATION

Securing Fresh, Local Food for the Region

- The plan offers a strategic framework for farmland protection.
- Coordinating and providing context for individual projects.
- Driving factor in securing additional \$20million funding from New York State.

SECURING FRESH, LOCAL FOOD FOR NEW YORK CITY AND THE HUDSON VALLEY

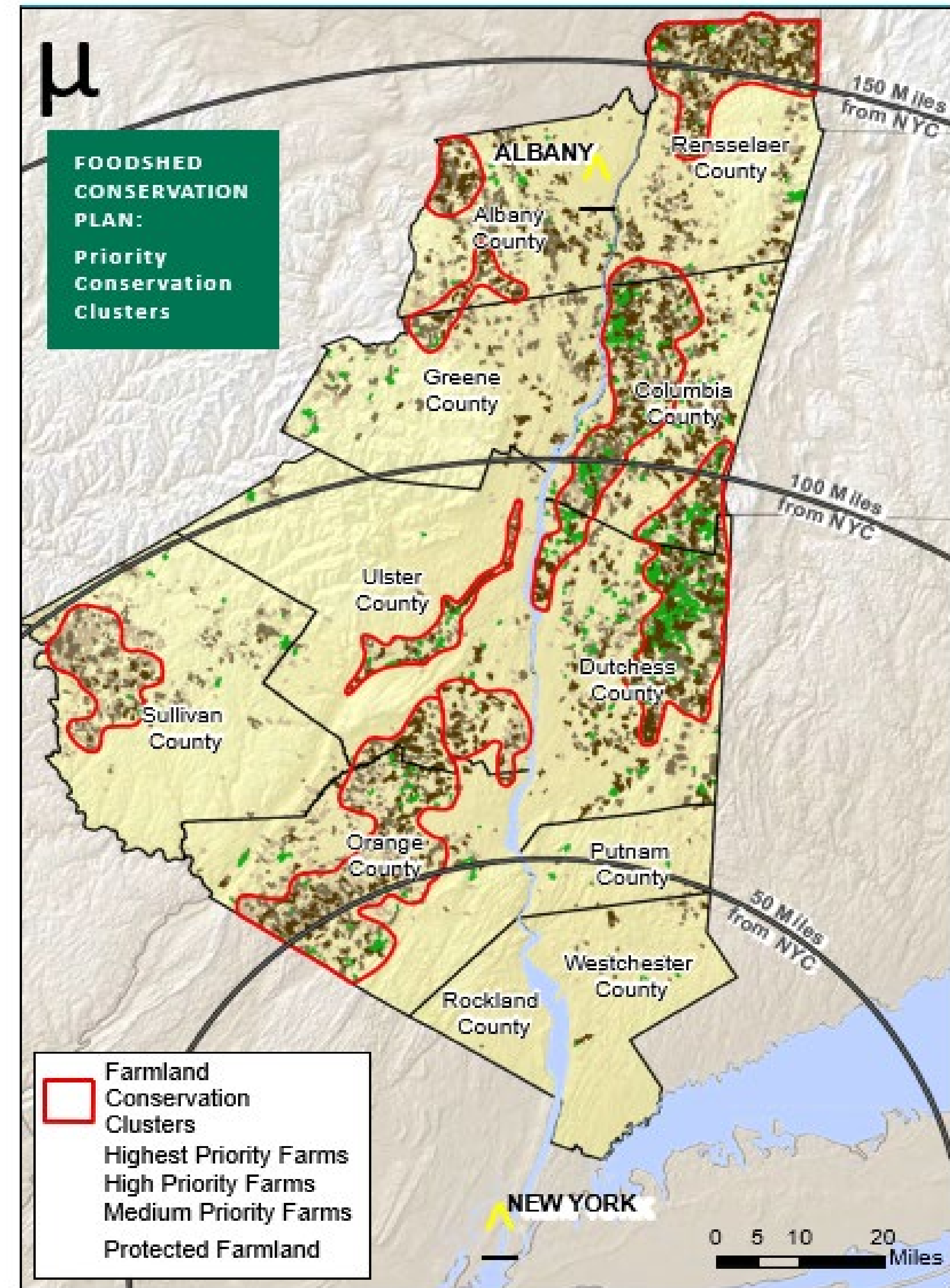
A Foodshed Conservation Plan for the Region



FOODSHED CONSERVATION

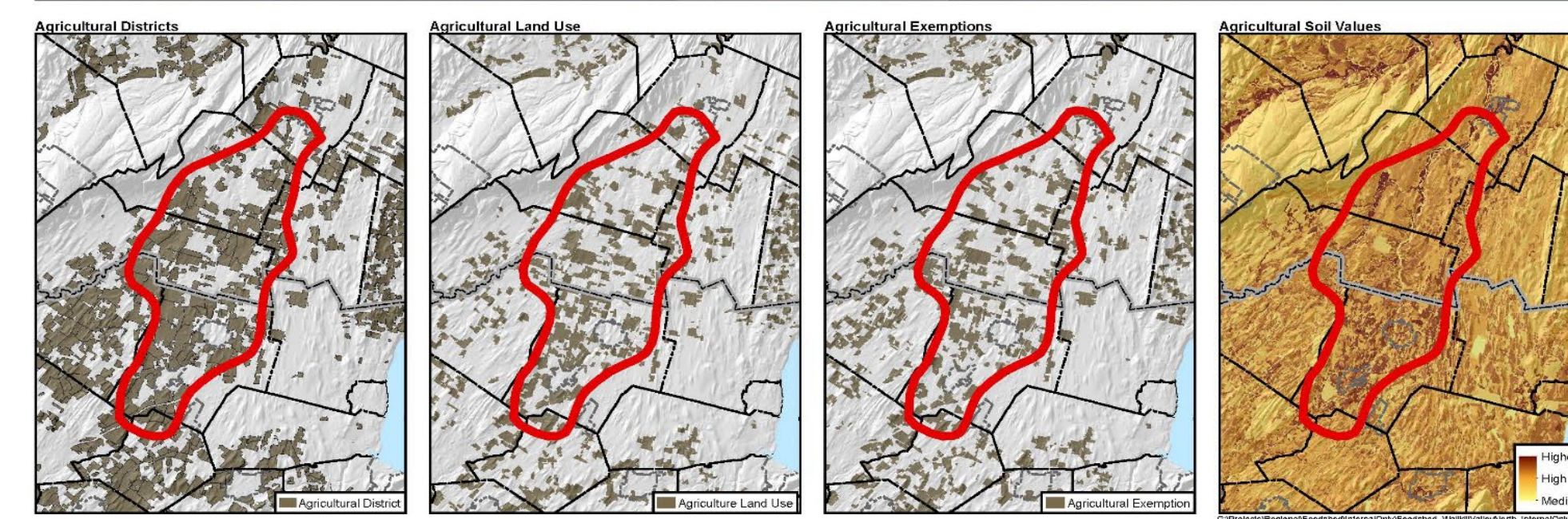
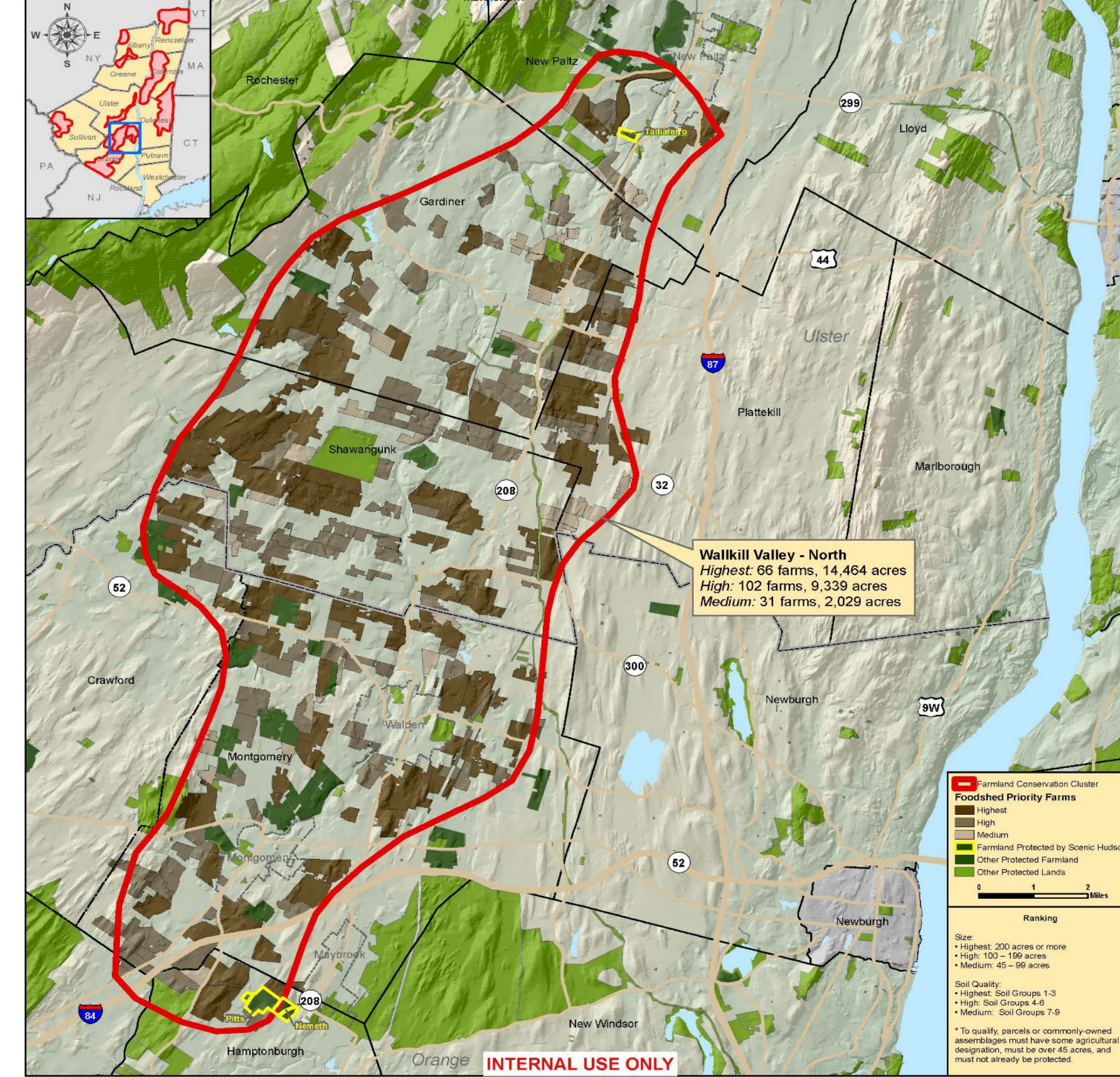
Securing Fresh, Local Food for the Region

- 5,390 farms, 731,860 acres
- 9 Priority Conservation Clusters





Land Protection Priorities



FOODSHED CONSERVATION

Securing Fresh, Local Food for the Region

- Walkkill Valley - North

What is a Land Trust?

- ▶ a nonprofit organization that, as all or part of its mission, actively works to conserve land by undertaking or assisting in land or conservation easement acquisition, or by its stewardship of such land or easements



**SCENIC
HUDSON**

land ■ parks ■ advocacy



What is a Conservation Easement?

- ▶ a flexible tool that permanently restricts non-agricultural property development
- ▶ various land use areas allow counted agricultural operations and flexibility for other uses



**SCENIC
HUDSON**

land ■ parks ■ advocacy



Benefits of Conservation Easements

- ▶ public conservation benefits
- ▶ ensure land remains open and available for agriculture
- ▶ opportunities to further farm growth and planning
- ▶ assists in landowner transition (between generations or to new farmer)



Options for Conveying a Conservation Easement

- ▶ donated by landowner
- ▶ sold for full fair market value (“purchase of development rights” or “PDR”)
- ▶ partially donated (“bargain sale”)



**SCENIC
HUDSON**

land ■ parks ■ advocacy

Primary Funding Sources for PDR

- ▶ local towns
- ▶ counties
- ▶ NYS Dept. of Ag. and Markets Farmland Protection Program
- ▶ USDA NRCS Farm and Ranchlands Protection Program
- ▶ private funding



**SCENIC
HUDSON**

land ■ parks ■ advocacy



Determining the Value of a Conservation Easement

- ▶ independent appraiser prepares “before and after” sales comparison analysis
- ▶ difference between “before” and “after” values determines value of easement



**SCENIC
HUDSON**

land ■ parks ■ advocacy

Conservation Easement Stewardship

- ▶ land trusts are bound to monitor and enforce conservation easements in perpetuity
- ▶ monitoring visits conducted annually



RED HOOK

Dutchess County

- 28 Farms, 3,100 acres
- 20 Partnership projects
- \$13.5 million (\$6.4 million from Scenic Hudson)
- ~60% of farmland protected



REGENERATIVE AGRICULTURE

Regenerative agriculture encompasses farming and grazing practices that improve natural resources, rebuild soil organic matter, capture carbon in the soil, restore soil biodiversity, and increase yields and on-farm climate resiliency.



CARBON



WATER QUALITY



RESILIENCY



FOOD PRODUCTION

Questions & Answers

Cari Watkins-Bates

Director of Land Conservation

cwatkins@scenichudson.org

<https://www.scenichudson.org/our-work/conservation/farms/>