










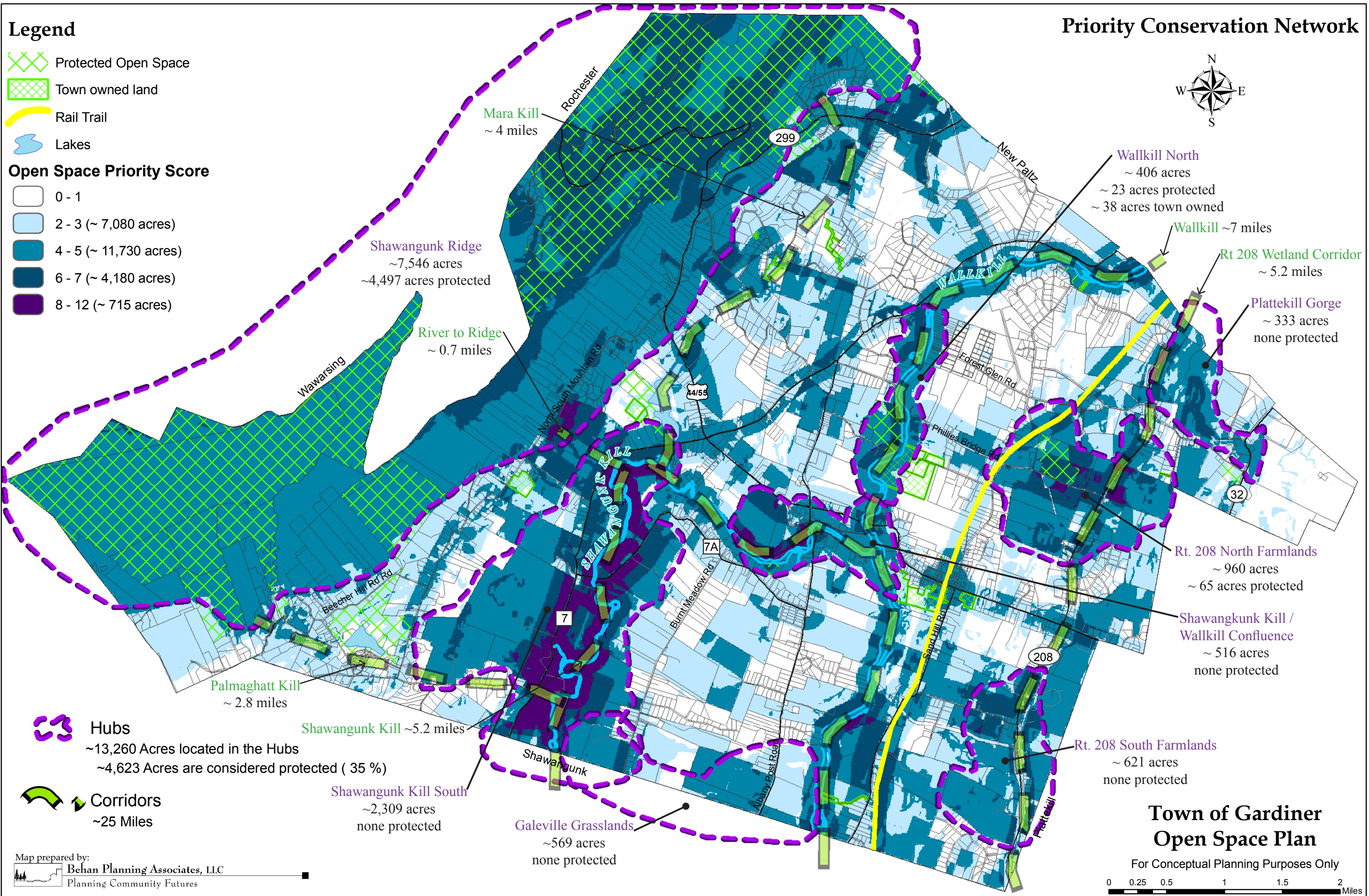
# Legend

-  Protected Open Space
-  Town owned land
-  Rail Trail
-  Lakes

## Open Space Priority Score

-  0 - 1
-  2 - 3 (~ 7,080 acres)
-  4 - 5 (~ 11,730 acres)
-  6 - 7 (~ 4,180 acres)
-  8 - 12 (~ 715 acres)

# Priority Conservation Network



**Shawangunk Ridge**  
~7,546 acres  
~4,497 acres protected

**River to Ridge**  
~ 0.7 miles

**Mara Kill**  
~ 4 miles

**Wallkill North**  
~ 406 acres  
~ 23 acres protected  
~ 38 acres town owned

**Wallkill** ~7 miles

**Rt 208 Wetland Corridor**  
~ 5.2 miles

**Plattekill Gorge**  
~ 333 acres  
none protected

**Rt. 208 North Farmlands**  
~ 960 acres  
~ 65 acres protected

**Shawangunk Kill / Wallkill Confluence**  
~ 516 acres  
none protected

**Rt. 208 South Farmlands**  
~ 621 acres  
none protected

**Shawangunk Kill** ~5.2 miles

**Shawangunk Kill South**  
~2,309 acres  
none protected

**Galeville Grasslands**  
~569 acres  
none protected

**Palmaghatt Kill**  
~ 2.8 miles

**Hubs**  
~13,260 Acres located in the Hubs  
~4,623 Acres are considered protected ( 35 %)

**Corridors**  
~25 Miles

## Town of Gardiner Open Space Plan

For Conceptual Planning Purposes Only

