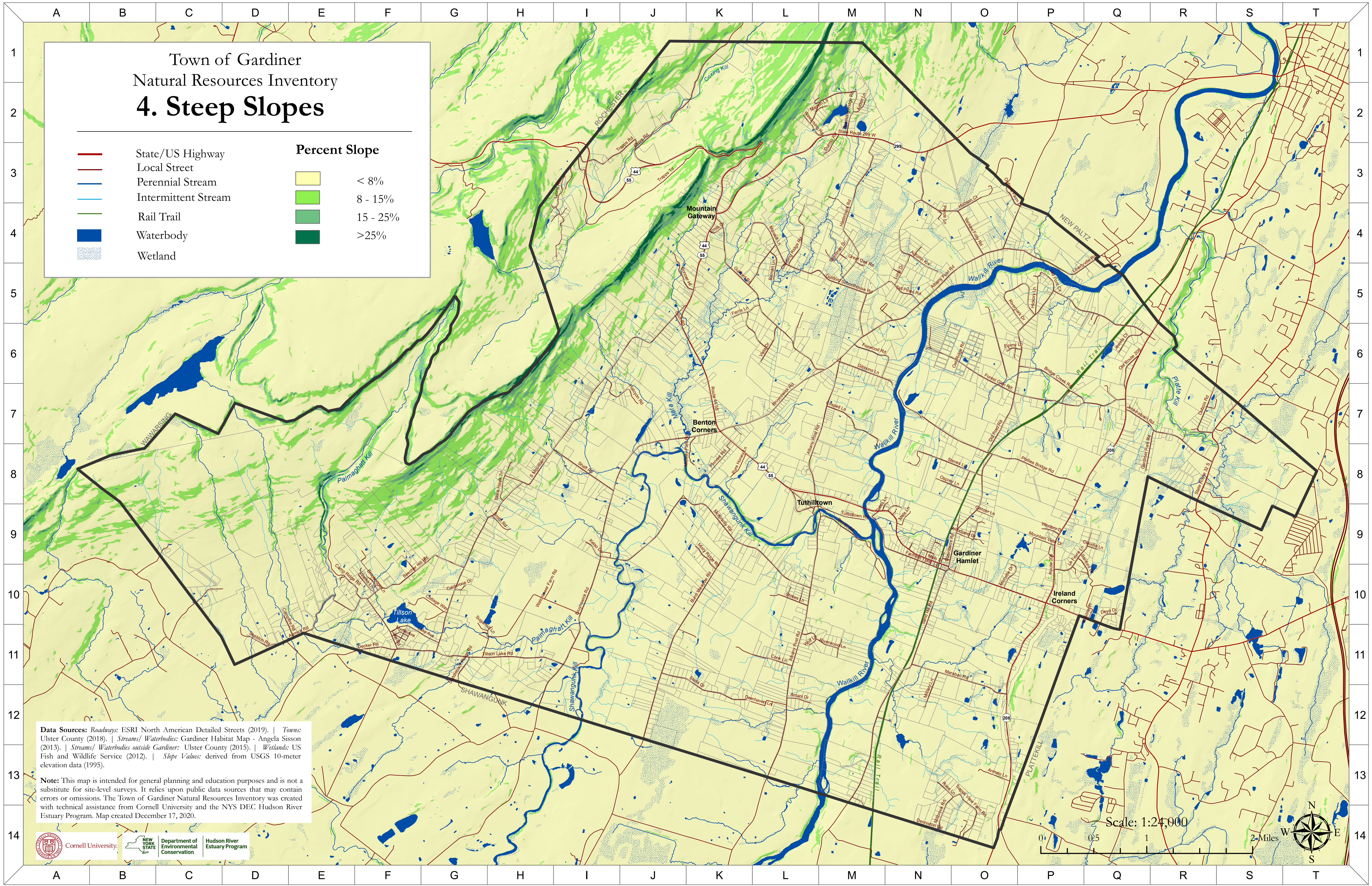
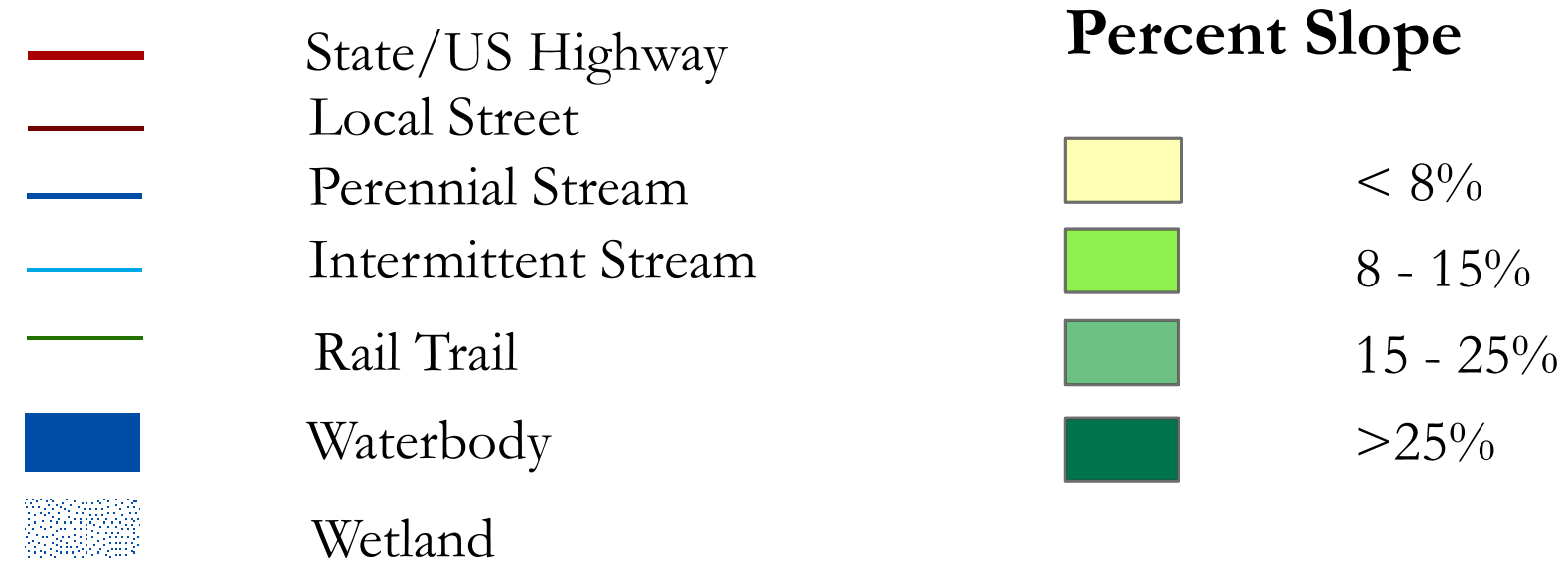


Town of Gardiner Natural Resources Inventory 4. Steep Slopes



Data Sources: Roadways: ESRI North American Detailed Streets (2019). | Towns: Ulster County (2018). | Streams/ Waterbodies: Gardiner Habitat Map - Angela Sisson (2013). | Streams/ Waterbodies outside Gardiner: Ulster County (2015). | Wetlands: US Fish and Wildlife Service (2012). | Slope Values: derived from USGS 10-meter elevation data (1995).

Note: This map is intended for general planning and education purposes and is not a substitute for site-level surveys. It relies upon public data sources that may contain errors or omissions. The Town of Gardiner Natural Resources Inventory was created with technical assistance from Cornell University and the NYS DEC Hudson River Estuary Program. Map created December 17, 2020.

