









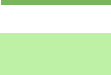



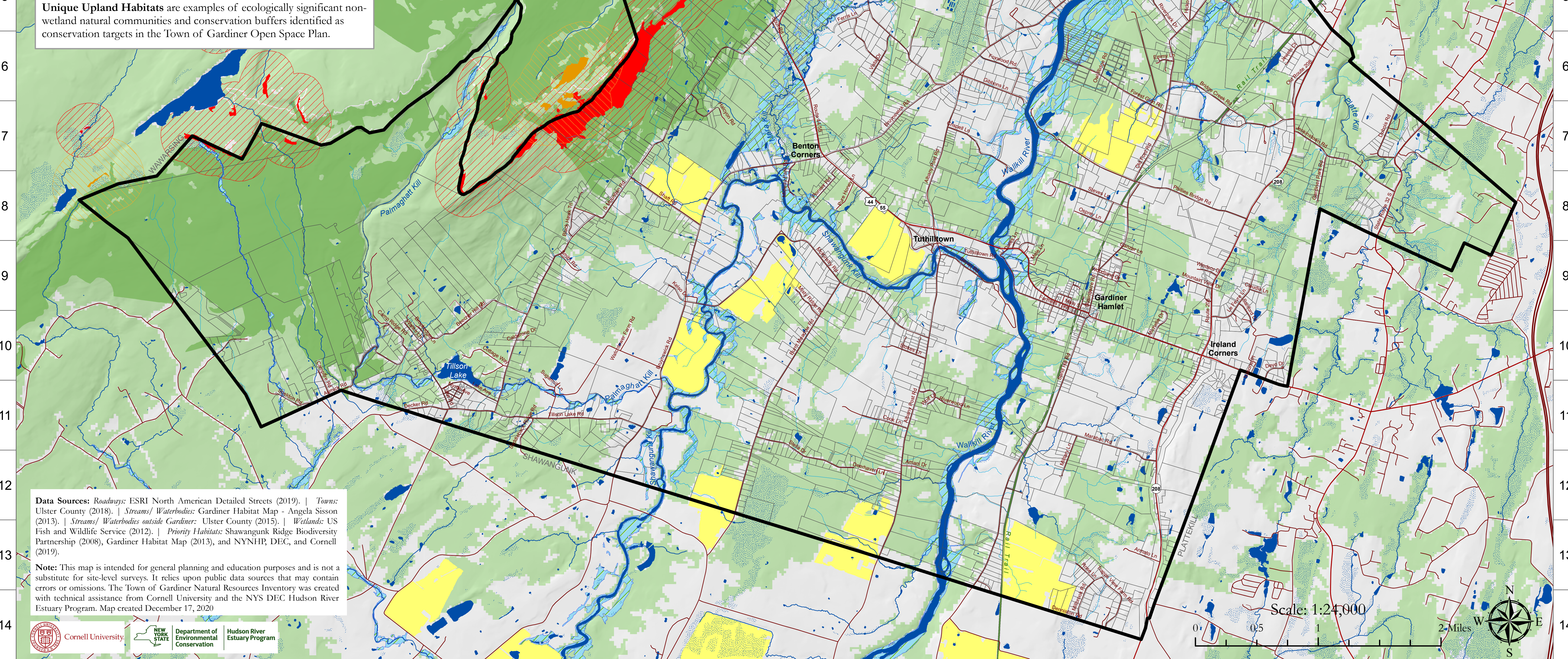


A B C D E F G H I J K L M N O P Q R S T

Town of Gardiner Natural Resources Inventory 16. Unique Upland Habitats

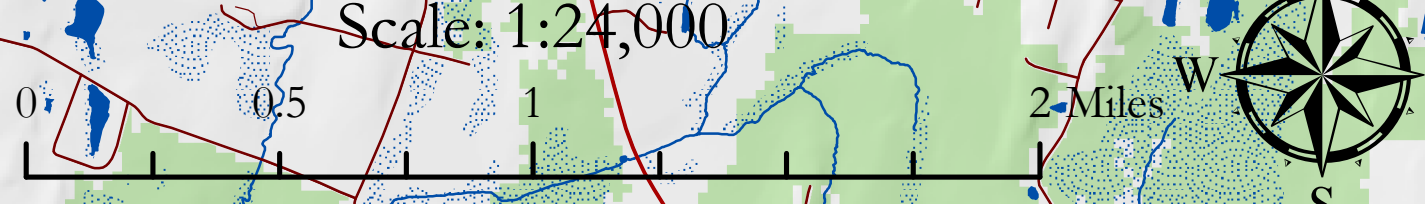
- | | | | |
|---|---------------------|---|-------------------------------|
|  | State/US Highway |  | Cliff and Talus |
|  | Local Street |  | Cliff and Talus 1000ft Buffer |
|  | Perennial Stream |  | Dwarf Pine Ridge |
|  | Intermittent Stream |  | Dwarf Pine 1500ft Buffer |
|  | Rail Trail |  | Chestnut Oak Forest >1000ac |
|  | Waterbody |  | Forest > 100 ac |
|  | Wetland |  | Floodplain Forest |
| | |  | Meadow > 100 ac |

Unique Upland Habitats are examples of ecologically significant non-wetland natural communities and conservation buffers identified as conservation targets in the Town of Gardiner Open Space Plan.



Data Sources: Roadways: ESRI North American Detailed Streets (2019). | Towns: Ulster County (2018). | Streams/ Waterbodies: Gardiner Habitat Map - Angela Sisson (2013). | Streams/ Waterbodies outside Gardiner: Ulster County (2015). | Wetlands: US Fish and Wildlife Service (2012). | Priority Habitats: Shawangunk Ridge Biodiversity Partnership (2008), Gardiner Habitat Map (2013), and NYNHR, DEC, and Cornell (2019).

Note: This map is intended for general planning and education purposes and is not a substitute for site-level surveys. It relies upon public data sources that may contain errors or omissions. The Town of Gardiner Natural Resources Inventory was created with technical assistance from Cornell University and the NYS DEC Hudson River Estuary Program. Map created December 17, 2020



A B C D E F G H I J K L M N O P Q R S T